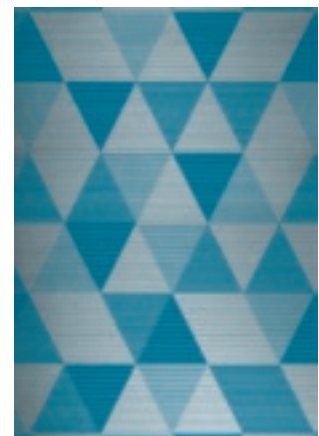
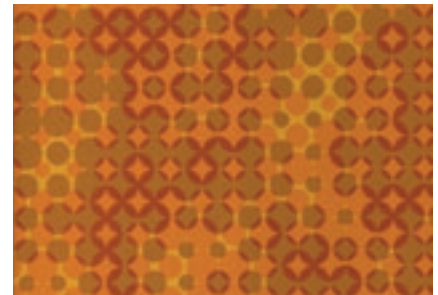
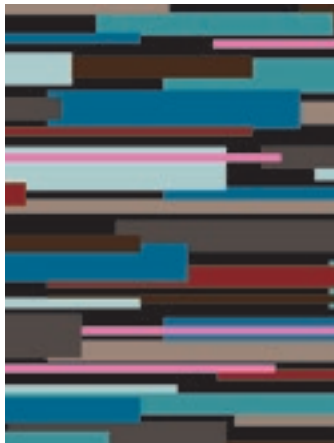


MATERIALS AND ACCESSORIES

KONE design collection

CREATING AN ELEVATOR	4
WALL FINISHES	6
FLOOR FINISHES	9
FRONT WALL FINISHES	10
CAR / LANDING DOOR FINISHES	11
SIGNALIZATIONS	12
CEILINGS	18
HANDRAILS	20
SEATS	21
BUFFER RAILS	21
SKIRTING	21
TENANT DIRECTORIES AND INFO SCREENS	22
MIRRORS	22



CREATING THE PERFECT ELEVATOR

When it comes to creating a consistent look and feel throughout your building, elevators play a key role. By freely combining KONE's flexible and versatile selection of materials and accessories, you can create an elevator interior that matches your building's design perfectly.

HOW TO CREATE YOUR CUSTOM ELEVATOR DESIGN

1 Choose the combination of wall, floor, and door material

Our wide range of available choices ensures that you can find the perfect combination to match your building's design, budget, and intended use requirements. For example, if durability and comfort are important, stone flooring is long-lasting and maintains its appearance even under heavy use, while colored or wood laminate wall finishes help to create a warm ambience inside the car. For a more exclusive look and feel, our new patterned steel and 3D glass finishes can really make your elevator stand out.

2 Select your ceiling design

KONE offers a wide range of different ceiling designs, equipped with modern and innovative lighting solutions that help create just the right atmosphere inside the elevator. Our ceilings are designed to give the best possible lighting quality while avoiding glare, ensuring every elevator trip is a pleasant and safe one. KONE's lighting solutions are also energy efficient – our LED lights use 80% less energy than traditional halogen lights.

3 Choose your accessories

Our accessories are designed to increase convenience for passengers, and include options such as handrails, seats, car operating panels, information screens, and tenant directories. KONE accessories have been designed to meet the specific requirements of different users and building types. For example, we offer special graphics designed for car operating panels in senior housing and children's hospitals, as well as customizable solutions for office, hotel, and retail environments.

MATERIALS AND ACCESSORIES FOR ALL PURPOSES

This catalog presents our complete selection of elevator car interior materials and accessories. The options are grouped into two categories: standard and premium. Premium materials and accessories have been created using exclusive materials and components and are designated with **P**.

Each carefully selected item has been designed to be both visually appealing and functional. The collection also contains several accessories that fulfill elevator accessibility and vandal codes.

The materials and accessories presented in this catalog are available for KONE MonoSpace® 500, KONE MonoSpace® 700, KONE MiniSpace™, KONE ReFresh™ 200 and KONE ReFresh™ 800.

For more design inspiration, take a look at the KONE Design Collection car interiors and create your own design with the KONE Car Designer tool: www.kone.XX/XXXX. Consult your KONE sales contact to discuss your final interior selection and for any additional information and support.

SELECTABLE CAR ELEMENTS



reddot design award
honourable mention 2012

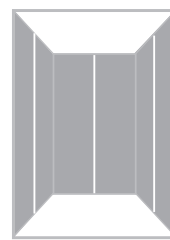
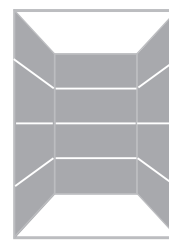
KONE's new, award-winning horizontal wall panel design is visually appealing and creates a spacious feeling inside the elevator cab.

Wall panel configuration

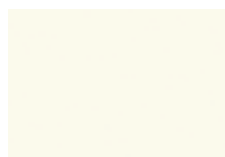
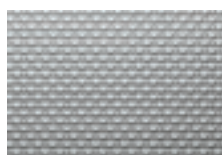
- All materials are available with vertical 2-panel per wall and horizontal 4-panel per wall designs for KONE MonoSpace® 500, KONE MonoSpace® 700, KONE MiniSpace™, and KONE ReFresh™ 800.
- KONE ReFresh™ 200 will feature vertical 1-panel rear wall design. Side wall panel configuration will vary depending on car depth.
- **Material scaling & variability**
- Patterned images not to scale. Consult your sales representative for Car Designer Tool and samples.
- Real wood laminates are made of natural materials so variation will occur.

Premium materials

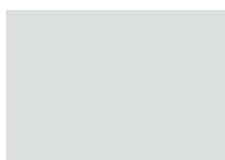
- Premium materials are designated by **P**. Premium materials, excluding Shangri-La Gold, are not available for KONE ReFresh 200.

Vertical
1-panel per wallVertical
2-panels per wallHorizontal
4-panels per wall**Painted steel**

Not available for KONE ReFresh 200

**P50**
Cloud White**P51**
Misty Gray**P52**
Sunny Yellow**P53**
Dawn Red**P54**
Sky Blue**Brushed stainless steel****F**
Asturias Satin**SS1**
Shangri-La Gold**H**
Murano Mirror**SS2**
Vegas Gold**SS3**
Paris Black**Textured stainless steel****K**
Scottish Quad**TS1**
Flemish Linen**SS4**
Aqua Weave**SS5**
Golden Linen**SS6**
Sunlit Twill**Etched stainless steel****ES1**
Silver Diamond**ES2**
Silver Bamboo**ES3**
Silver High-rise**ES4**
Golden Bamboo

Steel



Z
Zinc coated,
local paint or decoration
Not available for
KONE ReFresh™ 200.

Coated steel



R30
Nordic Gray

Wet polished st st

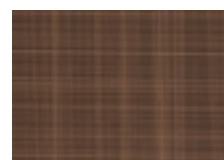


A (AISI316)
Acid proof
Only available for
KONE MonoSpace® 500
and KONE MonoSpace® 700
EN81-71 Cat 1 compliant

Metallic laminate



L200
Oriental Gold



L201
Oriental Bronze
Due to the special characteristics
of this material, the appearance
of brush marks may vary between
wall panels. Alignment of these
markings cannot be guaranteed.

Laminate



L202
Hazel Oak



L203
Almond Oak



L204
Cherry Oak



L205
Ebony Oak



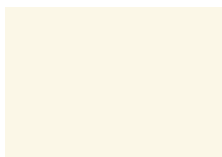
L206
Mandarin Orange



L207
Lime Green



L208
Lotus Blue



L209
Snowberry White



L226
Misty Gray



L227
Sunny Yellow
Only available for
KONE ReFresh™ 200.



L228
Dawn Red
Only available for
KONE ReFresh™ 200.

Printed laminate



L210
Graphic Bamboo



L211
Chennai Lights



L212
Color Cool



L213
Shanghai Lights

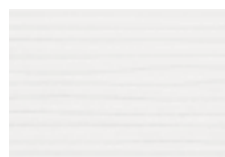
3D laminate



L214
Aqua Blue



L215
Aqua Black



L216
Windwall White



L217
Windwall Orange

Real wood laminate



L219
Oak



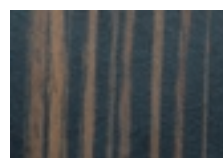
L220
Walnut



L221
Wenge



L222
Black Oak



L223
Wild Wenge

Transparent glass

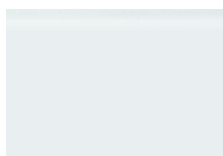
Not available for KONE ReFresh™ 200



TW1
Glass

For KONE MonoSpace® 500, glass is available for the rear wall only and is one piece. For certain ranges of KONE MonoSpace® 700 and KONE ReFresh™ 800, glass side walls are also available. Please consult your KONE sales representative for details.

Colored glass



GW1
Siberian Glaze

P



GW4
Manhattan Glaze

P



GW10
Jaipur Glaze

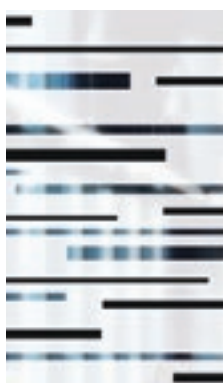
P



GW11
Soho Glaze

P

Patterned glass



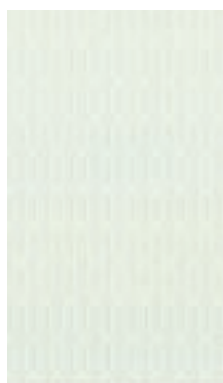
G5*
Silver Flow

P



G6
White Diamond

P



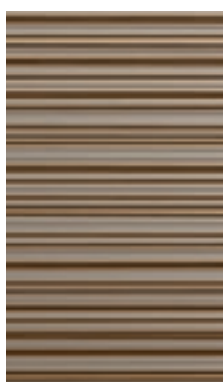
G7
Silver Chain

P



G9
Night High-rise

P



G11
Classic Bamboo

P



G12**
London Lights

P

Note

* These patterns on the glass are mirrors.

** These patterned glasses are transparent.

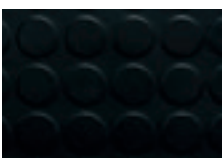
Metal plate



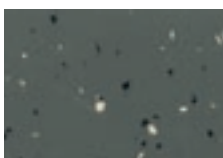
AL
Aluminum



Rubber



RC6
Dallas Black



RC20
Smoke Gray



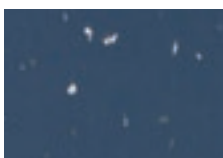
RC21
Denver Gray



RC22
Shell Gray

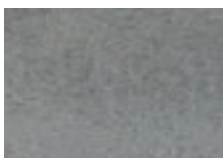


RC23
Coral Red



RC24
Dusk Blue

Vinyl



VF20
Ash Gray



VF22
Carbon Gray



VF23
Steel Gray

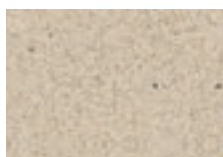


VF25
Flakey Gray

Stone



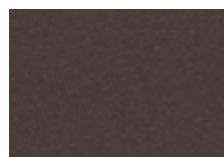
SF30
Chalk White



SF31
Grainy Sand



SF32
Diorite Black



SF33
Brass Brown



SF36
Spring Sand

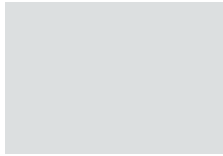


Local floor



0
Raw surface for local
finishing

Steel



Z
Raw surface
for local finishing

Coated steel



R30
Nordic Gray

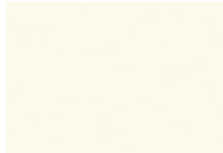
Wet polished stainless steel



A (AISI316) P
Acid proof
Only available for
KONE MonoSpace® 500
and KONE MonoSpace® 700
EN81-71 Cat 1 compliant

Painted steel

Not available for KONE ReFresh 200



P50
Cloud White



P51
Misty Gray

Textured stainless steel



K
Scottish Quad



TS1
Flemish Linen



SS4
Aqua Weave

Brushed stainless steel



F
Asturias Satin



SS1 P
Shangri-La Gold

Mirror polished stainless steel



H
Murano Mirror

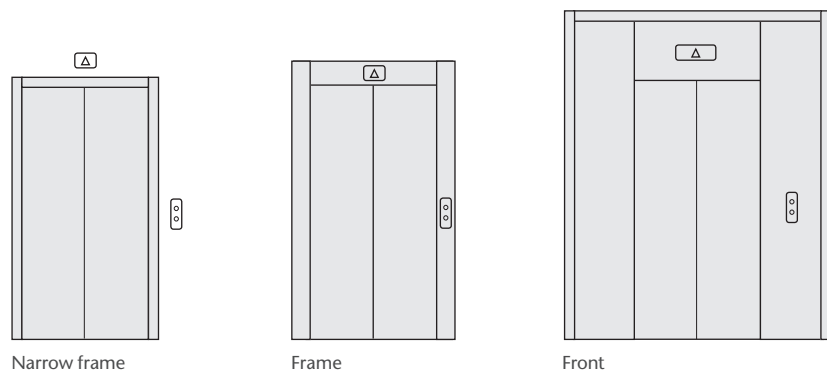


SS2 P
Vegas Gold



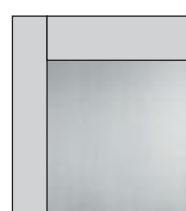
SS3 P
Paris Black

Landing door types

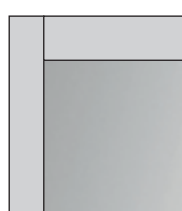


Note:
Finishing availability varies according to door type. Consult your sales representative for more information.

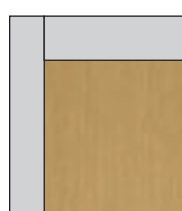
Stainless steel



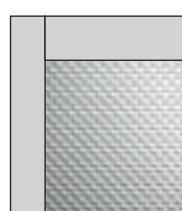
F
Asturias Satin



H
Murano Mirror



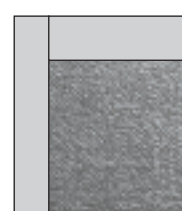
SS1
Shangri-La Gold



K
Scottish Quad



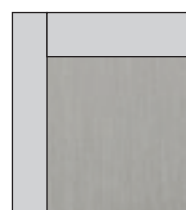
TS1
Flemish Linen



SS4
Aqua Weave

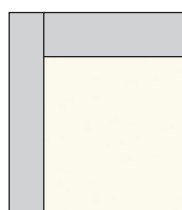
Textured stainless steel

Coated steel

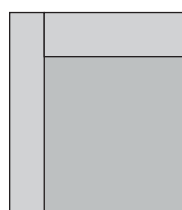


R30
Nordic Gray

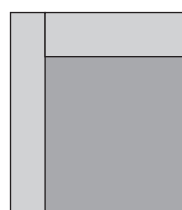
Painted steel



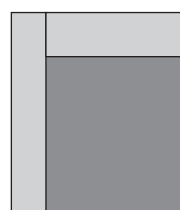
P50
Cloud White



P51
Misty Gray



P55
Thunder Gray
Landing door only

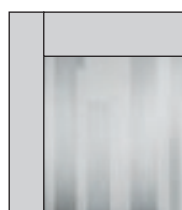


P
Painted steel

Etched stainless steel



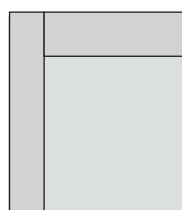
ES2
Silver Bamboo



ES3
Silver High-rise



ES5
Brushed Bamboo

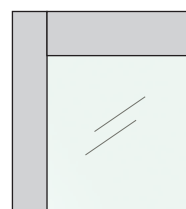


Z
Raw surface for local finishing



A (AISI316)
Acid proof
Only available for KONE MonoSpace® 500 and KONE MonoSpace® 700 EN81-71 Cat 1 compliant

Glass



TW1
Transparent

Patterned transparent glass



G14
White Bamboo



G12
London Lights

KSS 140

Flush mounted, vandal resistant signalization

Available with vertical paneling only
Only partial height available for KONE ReFresh™ 200
EN 81-71 Cat 1 compliant



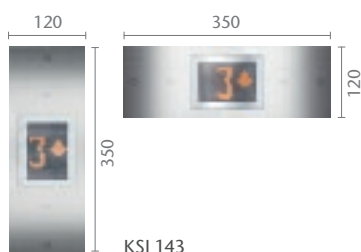
KSC 143
Partial height

Car operating panel (COP)

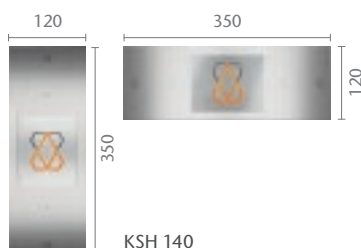
Faceplate finishings:
Scottish Quad (K) stainless steel or
Asturias Satin (F) stainless steel

Displays: Scrolling dot matrix

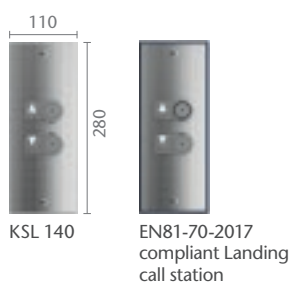
Landing devices



KSI 143



KSH 140



KSL 140

EN81-70-2017
compliant Landing
call station

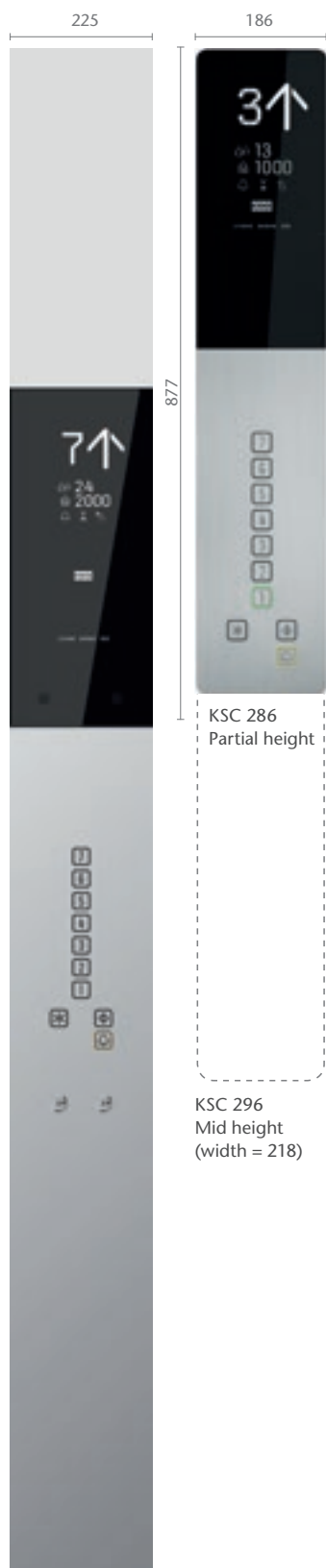
KSC 143
Full height
(Width 225)
CH* to be extended

*** Note**
The exact height
of the COP
depends on
the car height (CH)
and the selected
ceiling option.

KSS 280

Surface mounted signalization

Only partial height available for KONE ReFresh 200



KSC 276
Full height



reddot design award
winner 2012

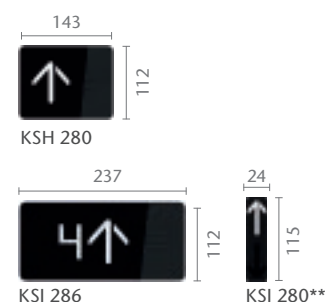
**Lantern in car

Car operating panel (COP)

Faceplate finishings:
Black polycarbonate and deep
formed brushed stainless steel,
vertical hairline

Displays: Segmented LCD

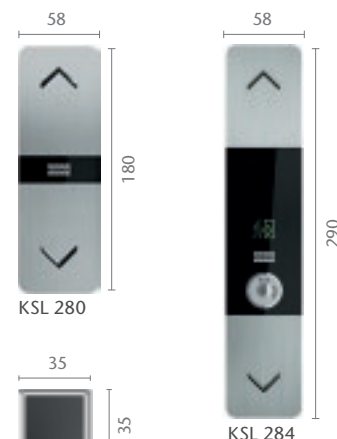
Landing devices



KSH 280

KSI 286

KSJ 280**



KSL 280

KSL 270

KSL 284



KSL 286
Simplex

KSL 286
Duplex

KSS 420

Surface mounted signalization

Available with vertical paneling only
Not available for KONE ReFresh 200



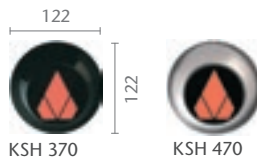
KSC 420
Partial height

Car operating panel (COP)

Faceplate finishings:
Asturias Satin (F) stainless steel

Displays:
KSC 420: 7-segment
KSC 421: Dot matrix

Landing devices



KSH 370

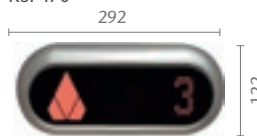
KSH 470



KSI 370 Only available for
KONE MonoSpace® 700



KSI 470



KSI 471



KSL 420

* Note

The exact height of the COP depends on
the car height (CH) and the selected ceiling option.

KSS 470

Surface mounted signalization

Available with vertical paneling only
Not available for KONE ReFresh 200



KSC 471
Full height

Car operating panel (COP)

Faceplate finishings:
Asturias Satin (F) stainless steel

Displays:
KSC 470: 7-segment
KSC 471: Dot matrix

Landing devices

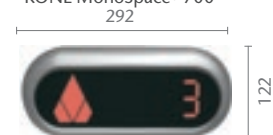


KSH 370

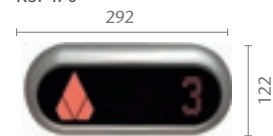
KSH 470



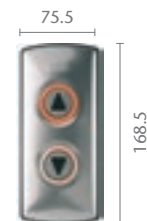
KSI 370 Only available for
KONE MonoSpace® 700



KSI 470



KSI 471



KSL 470

KSS 570

Surface mounted signalization

Available with vertical paneling only
Only partial height available for KONE ReFresh™ 200
Not available for KONE MonoSpace® 700 or KONE MiniSpace™



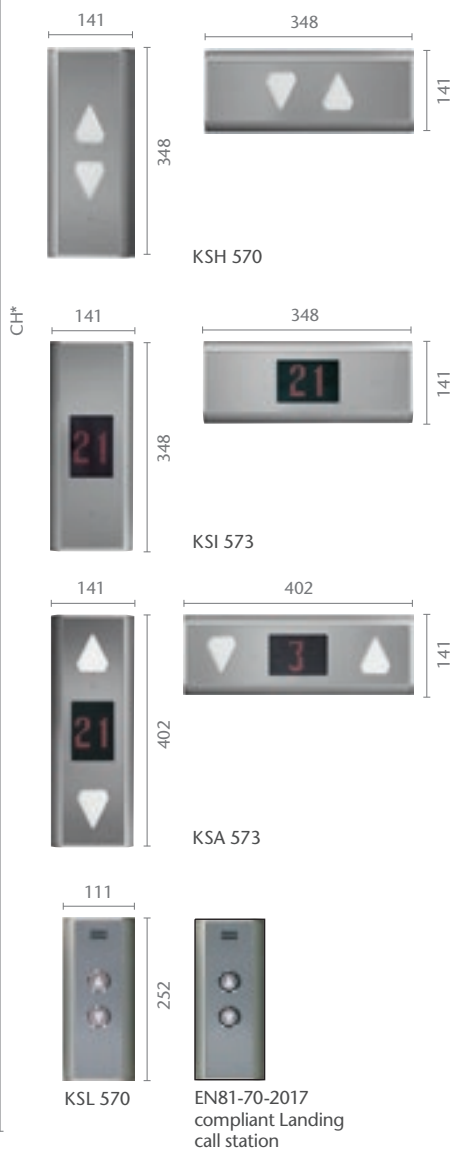
KSC 573/575
Full height

Car operating panel (COP)

Faceplate finishings:
Asturias Satin (F)
Murano Mirror (H)
Golden Mirror (HTIN)

Displays:
KSC 573: Scrolling dot matrix
KSC 575: Black and white LCD

Landing devices



KSS 670

Flush mounted signalization

Only partial height available for KONE ReFresh 200 (width 240)



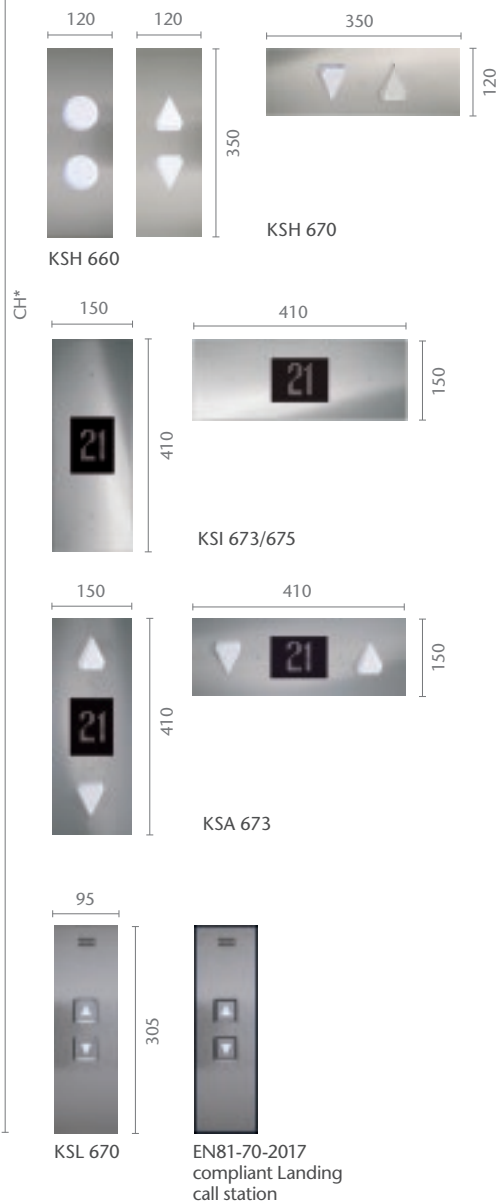
KSC 673/675
Full height

Car operating panel (COP)

Faceplate finishings:
Asturias Satin (F)
Murano Mirror (H)
Golden Mirror (HTIN)

Displays:
KSC 673: Scrolling dot matrix
KSC 675: Black and white LCD

Landing devices



* Note

The exact height of the COP depends on the car height (CH) and the selected ceiling option.

KSS 800

Surface mounted signalization

for KONE Polaris™ Destination Control System (DCS)
Not available for KONE ReFresh 200



KSC 863
Full height

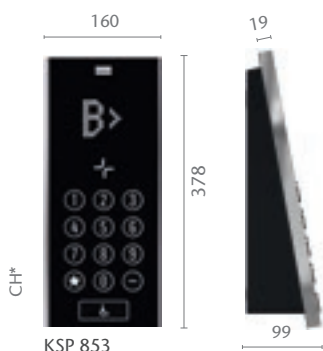
Car operating panel (COP)

Faceplate finishings:
Black polycarbonate

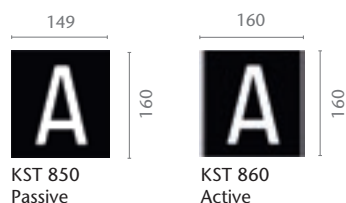
Displays:
KSC 863: Scrolling dot matrix

KSC 853 Partial height also available
Width 200 mm, Height 1300 mm

Destination operating panel (DOP)



Elevator identifier (EID)



reddot design award
winner 2012

KSS 970

Flush mounted signalization

Only partial height available for KONE ReFresh 200 (width 240)



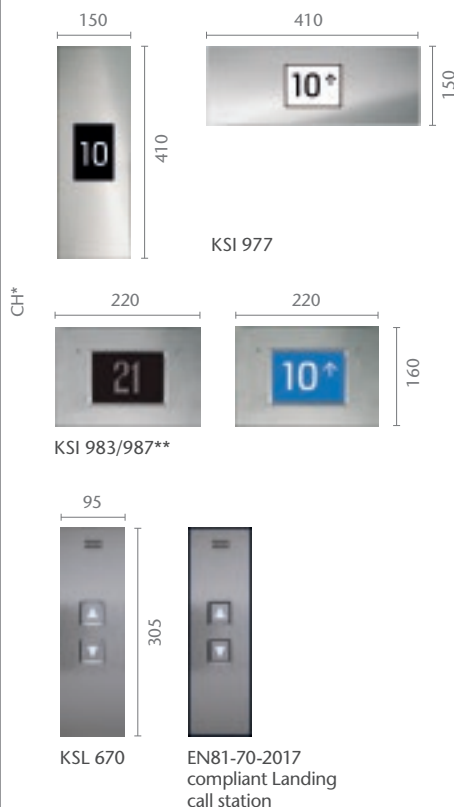
KSC 977
Full height

Car operating panel (COP)

Faceplate finishings:
Asturias Satin (F)
Murano Mirror (H)
Golden Mirror (HTIN) **P**

Displays:
KSC 977: LCD Display

Landing devices



*** Note**
The exact height of the COP depends on the
car height (CH) and the selected ceiling option.

**** Note**
Only available for KONE MonoSpace® 700
and KONE MiniSpace™

KONE DESIGN SIGNALIZATION

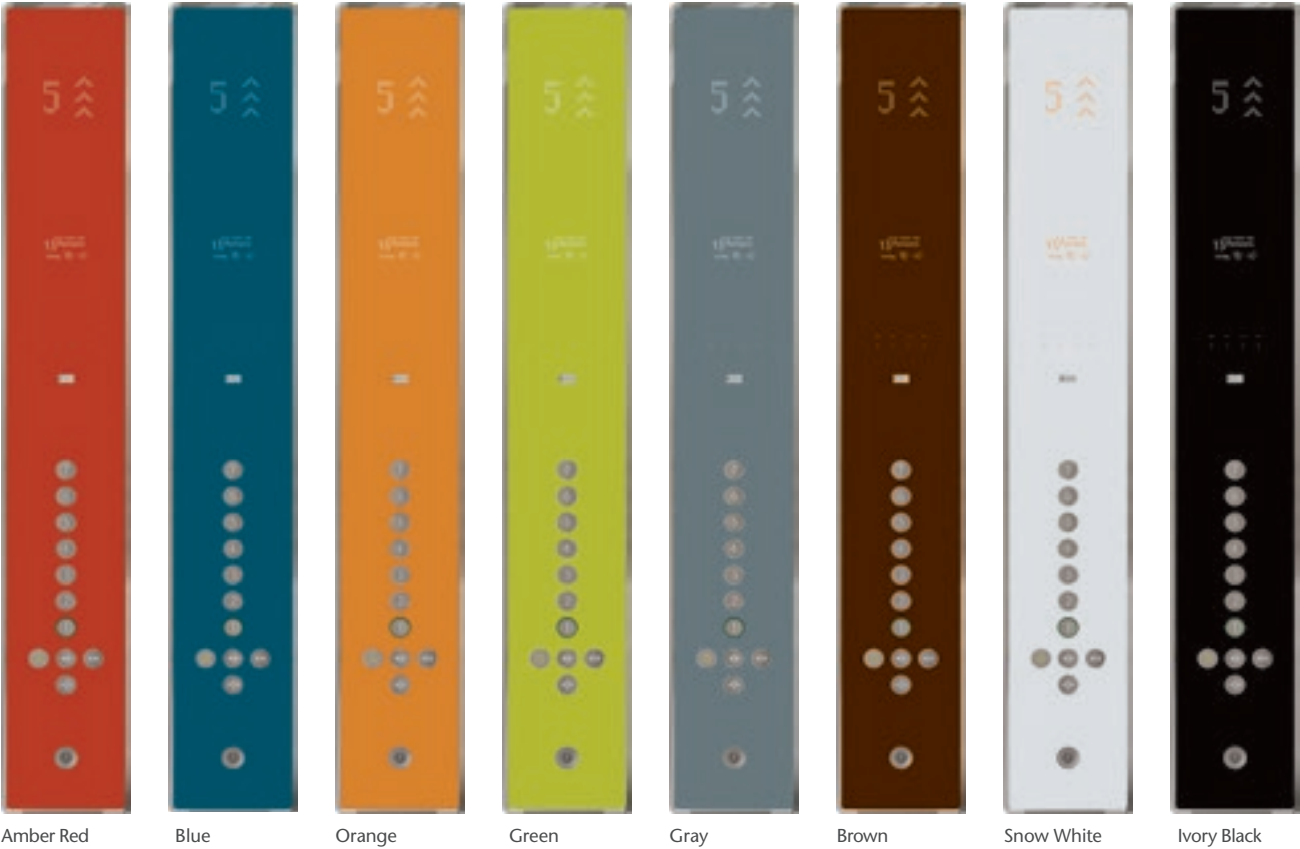
Faceplate alternatives for KSS D Series signalization (KSC D20, KSC D50 and KSC D60) series

The D series signalization is available in these KONE Design signalization alternatives, in stainless steel and with unique designs. These are KONE Design signalization examples of KSC D20 Partial height Car operating panel (COP)

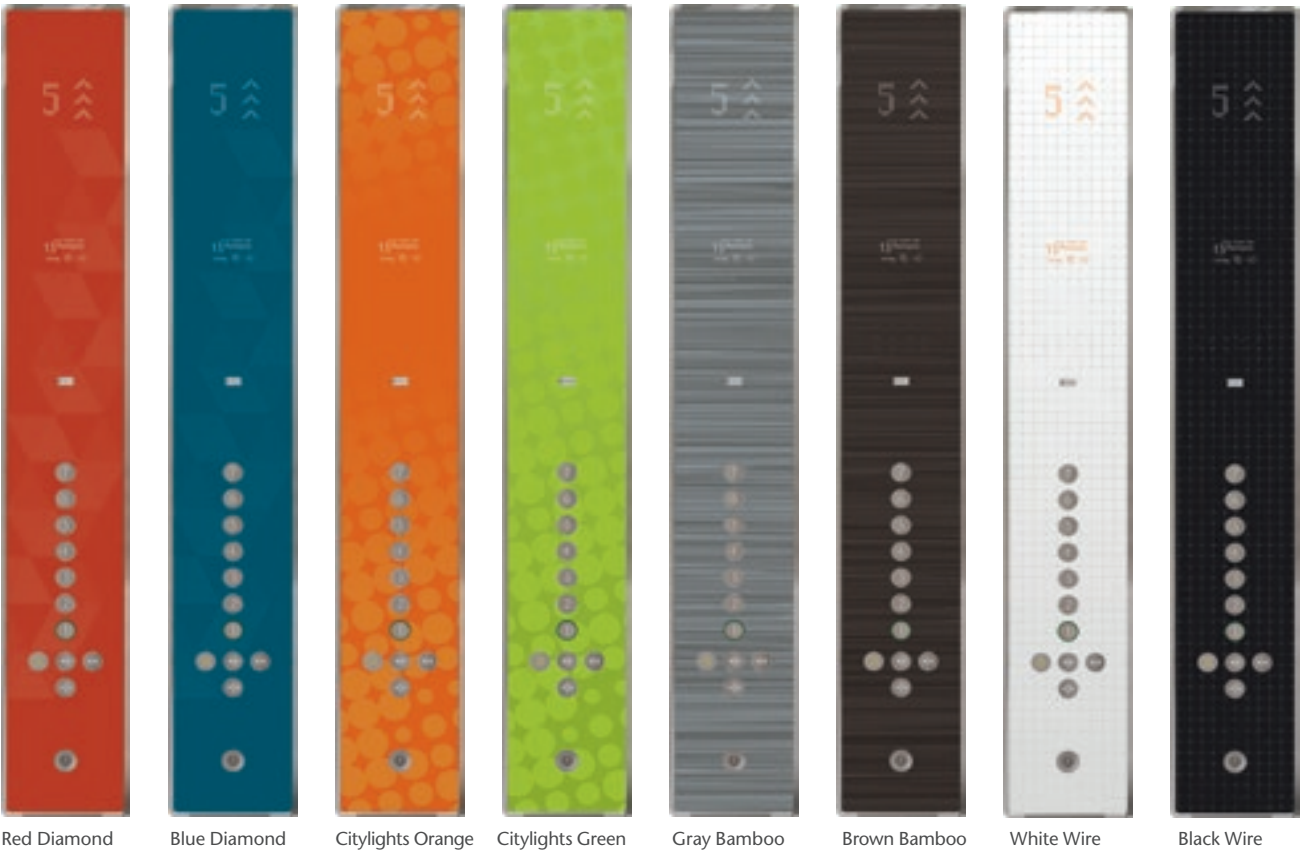
Partial height Car operating panel (COP)
Width 200 mm, height 1300 mm



Solid colors



Patterned colors



KONE KSS D SERIES SIGNALIZATION

KSC D20 series

Partial height
Car operating panel
(COP)



▲
Width 200 mm,
Height 1300 mm

KSC D23,
Brushed stainless steel

KSC D50 and D60 series

Full height
Car operating panel
(COP)



◀
Width 225 mm,
Height depends on car height (CH)
and selected ceiling option

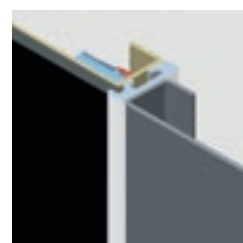
KSC D53 Surface mounted
and KSC D63 Flush mounted,
Brushed stainless steel

UNIQUE DESIGNS

Available for partial and full height Car operating panel (COP)



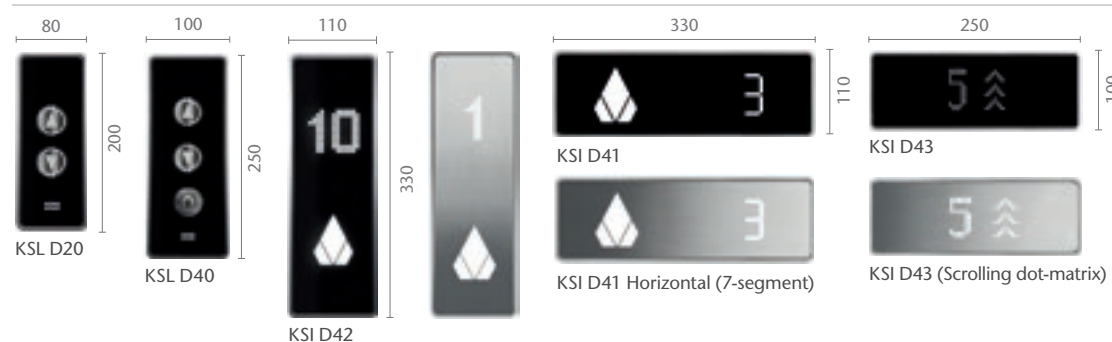
KSC D53



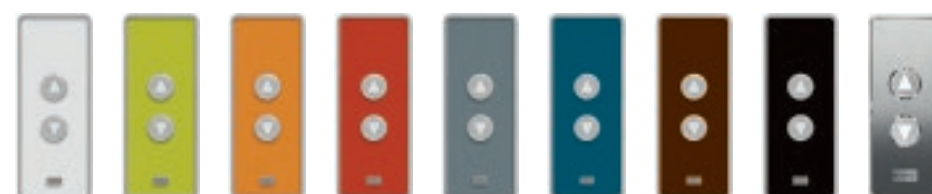
KSC D63

Landing devices for KSS D series signalization Unique/ Numbers and Blocks

Hall lantern indicators



Hall lantern



Note:
Custom designs are also available.
Contact your KONE sales
representative for more information.

Indicator faceplate material is always poly carbonate. The landing call stations are also available in stainless steel.



Type: **RL12**, Integrated ceiling
 Finishings: Asturias Satin (F)
 Cloud White (P50)
 Misty Gray (P51)
 Lighting: LED spot lights, round
 Note: Only available for KONE MonoSpace® 500



Type: **CL80**
 Finishings: Asturias Satin (F)
 Cloud White (P50)
 Murano Mirror (H) **P**
 Lighting: KONE Eco spot lights, round



Type: **CL88**
 Finishings: Asturias Satin (F)
 Cloud White (P50)
 Murano Mirror (H) **P**
 Lighting: LED spot lights, round



Type: **RL14**
 Finishings: Asturias Satin (F)
 Cloud White (P50)
 Misty Gray (P51)
 Lighting: Roof integrated, direct lighting LED panel
 Note: Only available for KONE MonoSpace® 500



Type: **CL94**
 Finishings: Asturias Satin (F)
 Cloud White (P50)
 Murano Mirror (H) **P**
 Lighting: T5 fluorescent tubes
 Note: EN81-71 Cat1 compliant version available



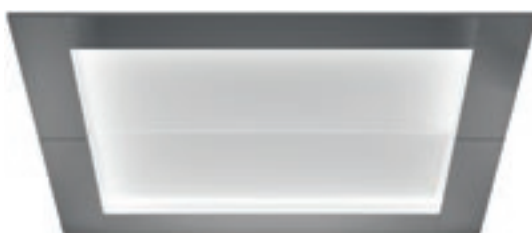
Type: **CL95**
 Frame finishing: Asturias Satin (F)
 Murano Mirror (H) **P**
 Center panels: Cloud White (P50) painted steel
 Lighting: T5 fluorescent tubes



Type: **CL97**
 Finishing: Asturias Satin (F)
 Murano Mirror (H) **P**
 Shangri-La Gold (SS1) **P**
 Lighting: LED spot lights, square



Type: **CL98**
 Finishing: Asturias Satin (F)
 Murano Mirror (H) **P**
 Lighting: LED spot lights, rectangular



Type: **CL104**
 Frame finishing: Asturias Satin (F)
 Murano Mirror (H) **P**
 Center panels: Cloud White (P50) painted steel
 Lighting: T5 fluorescent tubes



Type: **CL151**

Frame finishings: Asturias Satin (F)

Shangri-La Gold (SS1)

Lighting: LED panel with frosted white diffuser, plain or with graphics.

Graphic options for LED panel



1
Geometric



2
High-Rise



3
Bamboo



Type: **CL162**

Finishings: Asturias Satin (F)

Murano Mirror (H)

Top panel: Cloud White (P50) painted steel

Lighting: T5 Fluorescent tubes and LED spot lights, square



Type: **CL181**

Finishings: Asturias Satin (F)

Murano Mirror (H)

Shangri-La Gold (SS1)

Vegas Gold (SS2)

Lighting: LED

See below for actual CL181 ceiling installed in car and page 23 for full car image.



Type: **CL193**

Frame finishing: Asturias Satin (F)

Center panels: Cloud White (P50) painted steel

Lighting: T5 fluorescent tubes



Type: **LF1**

Frame finishing: Asturias Satin (F)

Cloud White (P50) painted steel

Misty Gray (P51) painted steel

Lighting: T5 fluorescent tubes

Note:

Only available for KONE MonoSpace® 700
EN81-71 cat 1 compliant version available



Actual CL181 ceiling installed in car



CL181



HR61*
Round
Finishings:
Brushed stainless steel (F)
Mirror polished stainless steel (H) P



HR62
Square
Finishings:
Brushed stainless steel (F)
Mirror polished stainless steel (H) P



HR63 P
Flat
Finishings:
Brushed stainless steel (F)
Mirror polished stainless steel (H)



HR64*
Round, bent ends
EN 81-71 Cat 1 compliant
Finishings:
Brushed stainless steel (F)
Mirror polished stainless steel (H) P
Golden brushed stainless steel (SS1) P



HR65*
Triangular, bent ends
EN 81-71 Cat 1 compliant
Finishings:
Brushed stainless steel (F)
Mirror polished stainless steel (H) P



HR81*
Round, sidewall and floor mounted
Finishings:
Brushed stainless steel (F)
Mirror polished stainless steel (H) P
Golden brushed stainless steel (SS1) P
Not available for KONE ReFresh™ 200



F
Brushed stainless steel



H P
Mirror polished stainless steel



SS1 P
Golden brushed stainless steel



HR94 P
Round, bent ends
EN 81-71 Cat 2 compliant
Finishings:
Brushed stainless steel (F)
Only available for KONE MonoSpace® 700
and KONE MiniSpace™



HR31
Round
Aluminum (LBE) with black
end caps



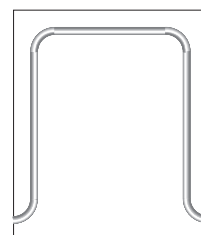
HR34
Round, bent ends
Aluminum (LBE) with
black end caps



HR71**
Round
Dark Wood with brushed
stainless steel fixings (WDF)

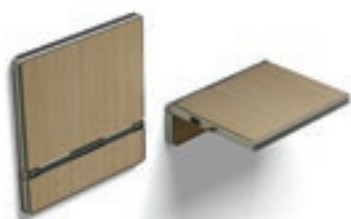


HR71**
Round
Light Wood with brushed
stainless steel fixings (WLF)

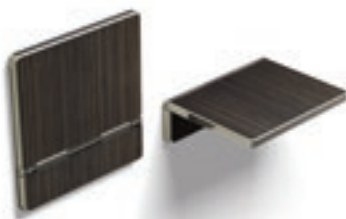


* Also available as a
continuous handrail

** Golden brushed stainless P
steel fixings also available



FS1
L202
Hazel Oak



FS1
L205
Ebony Oak



FS1
L224
Black Coal



BR1
Flemish Linen (TS1)



BR1
Lava Black (RC26)



BR1
Light Wood (WL) P



BR1
Dark Wood (WD) P



F
Asturias Satin



SS1
Shangri-La Gold P

Tenant directory



TD3

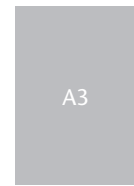
Frame finishing: brushed or polished aluminum

The printed tenant directory is completely customizable and can be easily updated according to the customer's needs.

Sizes



TD1/TD3*



TD2/TD4*€

Directories can be installed either vertically or horizontally.

* Note

For TD3 and TD4: brushed stainless steel base, tempered glass door.

Digital info screens



IS08

Standard version, 8.4" display
Surface mounted

IS15

Premium offline version, 15" display* P
Surface mounted or Flush mounted

Additional features may be available. Consult your sales representative for more information.

Frame finishing: brushed or polished stainless steel.

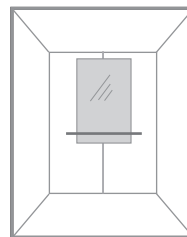
* Note

Not available for KONE MonoSpace® 500

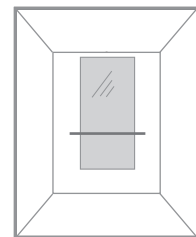


SIZES AND POSITIONING

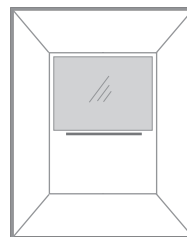
Mirrors can be located on the rear and side walls of the elevator car. Mirror and handrail dimensions are determined by the wall width. Please consult your KONE sales representative for details.



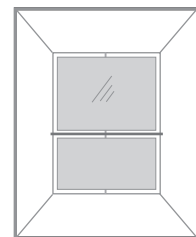
MR1
Partial width/Partial height



MR1
Partial width/Mid height



MR1 P
Full width/Partial height



MR1 P
Full width/Full height



KONE provides innovative and eco-efficient solutions for elevators, escalators, automatic building doors and the systems that integrate them with today's intelligent buildings.

We support our customers every step of the way; from design, manufacturing and installation to maintenance and modernization. KONE is a global leader in helping our customers manage the smooth flow of people and goods throughout their buildings.

Our commitment to customers is present in all KONE solutions. This makes us a reliable partner throughout the life cycle of the building. We challenge the conventional wisdom of the industry. We are fast, flexible, and we have a well-deserved reputation as a technology leader, with such innovations as KONE MonoSpace®, KONE NanoSpace™ and KONE UltraRope®.

KONE employs close to 52,000 dedicated experts to serve you globally and locally.

KONE CORPORATION

Head office

Kartanontie 1
P.O. Box 8
FI-00331 Helsinki
Finland
Tel. +358 (0)204 751

Corporate offices

Keilasatama 3
P.O. Box 7
FI-02151 Espoo
Finland
Tel. +358 (0)204 751

www.kone.com